

NCER CONFERENCE 2018

GreenVest, LLC

**Maryland – Corporate
Headquarters**

2200 Somerville Road
Suite 300
Annapolis MD 21401
410-987-5500

New Jersey

3175 Route 10, Suite 100
Denville, NJ 07834
732-902-6644

**DEVELOPING AND LEVERAGING A
PUBLIC-PRIVATE PARTNERSHIP FOR A
LARGE-SCALE STREAM AND WETLAND
RESTORATION ON FEDERAL PROPERTY**

AUGUST 28, 2018

PRESENTER: BRETT BERKLEY, SENIOR VICE PRESIDENT

BRETT@GREENVESTUS.COM

GreenVest
VISION • PERFORMANCE • RESULTS

Overview

- Who is GreenVest & What Do We Do?
- What are Ecological Assets?
- Public Private Partnerships (P3)
- BARC Project Overview & Location
- Project Partners
- Project Objectives
- Pre-Construction Photos
- Construction & Post Construction Photos

Who is GreenVest & What Do We Do?

- Land Based, Multi-disciplinary, Ecological Asset Development Firm
 - Develop & operate Mitigation Banks in NC, NJ & MD
 - Fully Deliver Fixed-Price Compensatory Mitigation
 - Implement Ecological Restoration
 - Implement Ecosystem & Community Resiliency
- We identify & implement Ecological Restoration & Green Infrastructure Projects
 - Assemble mutually beneficial partnerships
 - Match projects with funding
- Scientists, Real Estate, Legal, Finance, Project/Program Management, Construction Management & Construction Professionals
- In business over 26 years with offices in Maryland & New Jersey

What are Ecological Assets?

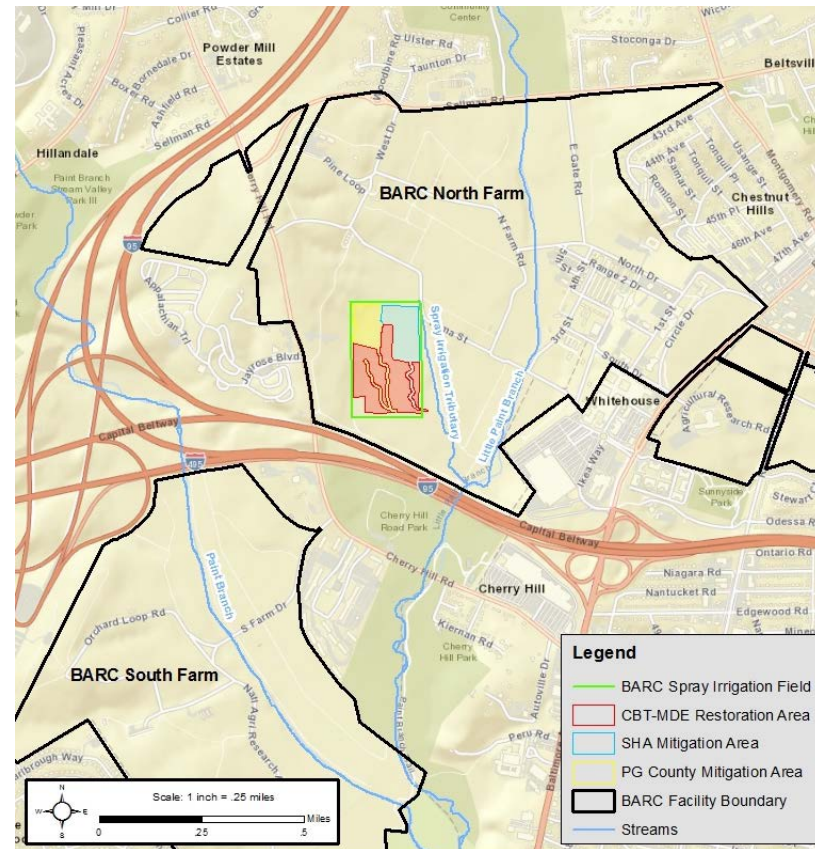
- **“Ecological-assets”** are natural systems or system components that provide functions and values, which generate direct/indirect benefit to humans:
 - Ecological-assets are monetized by creating ecological uplift, which is approved as a tradable commodity in the form of a salable credit.
- **“Ecosystem Services Industry”** recognizes classes of “Ecological-assets” that are defined by Federal, State, Regional and Local law and regulation:
 - Wetlands & Streams
 - Forest & FIDS
 - R, T & E Species/Habitat
 - TMDL Reductions (LBS N, P, S)
 - MS4 Compliance (Impervious Acres Treated)

Public Private Partnerships (P3)

- Contractual arrangement between public agencies and private sector entities.
- Skills and assets are shared between the sectors leveraging the relative strengths of each.
- Typically the private sector is harnessed for its efficiency, expediency and innovative approach in this case to develop and delivery ecological assets

BARC Project Overview & Location

- Urban Restoration in the Headwaters of Little Paint Branch, Anacostia River Basin
 - ~3.75 Miles upstream of the Anacostia River
 - ~5.5 Miles from Washington DC
- Located on the USDA - Beltsville Agricultural Research Center, North Farm
 - Former Ditched/Drained Spray Irrigation Field
 - Historically Forested Headwater Wetlands, Uplands and Streams
- Forested, Headwater Stream, Wetland, Upland Restoration
 - 19.319 acres of Forested Headwater Wetlands
 - 5.61 acres of Forested Uplands
 - 6,573 lf of Stream Restoration



Project Partners



STATE HIGHWAY
ADMINISTRATION

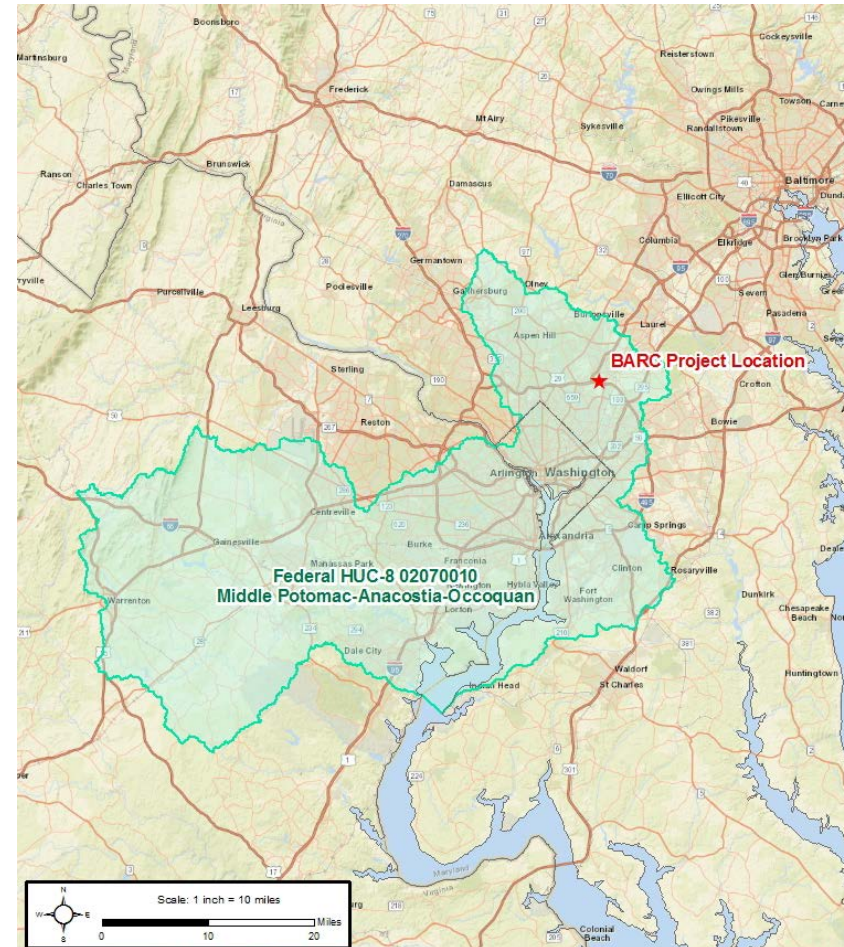


Maryland
Department of
the Environment



Project Objectives: Project Overview

- **USDA ARS**
 - Meet their EO 13508 Objectives per the Chesapeake Bay TMDL
 - Meet USDA programmatic Objectives for Ecosystem Services
 - Support Facility-Based Sustainable Land Use Practices
 - Support the objectives of the Anacostia River Watershed Restoration Partnership
- **CBT/MDE**
 - Deploy ILF funds collected by MDE to Develop Compensatory Mitigation – Middle Potomac HUC 8 Watershed
- **PG-DPWT**
 - Provide Advanced Section 404 Stream and Wetland Mitigation for planned capital Improvement projects.
- **SHA**
 - Provide Advanced Section 404 Stream and Wetland Mitigation for planned capital Improvement projects.

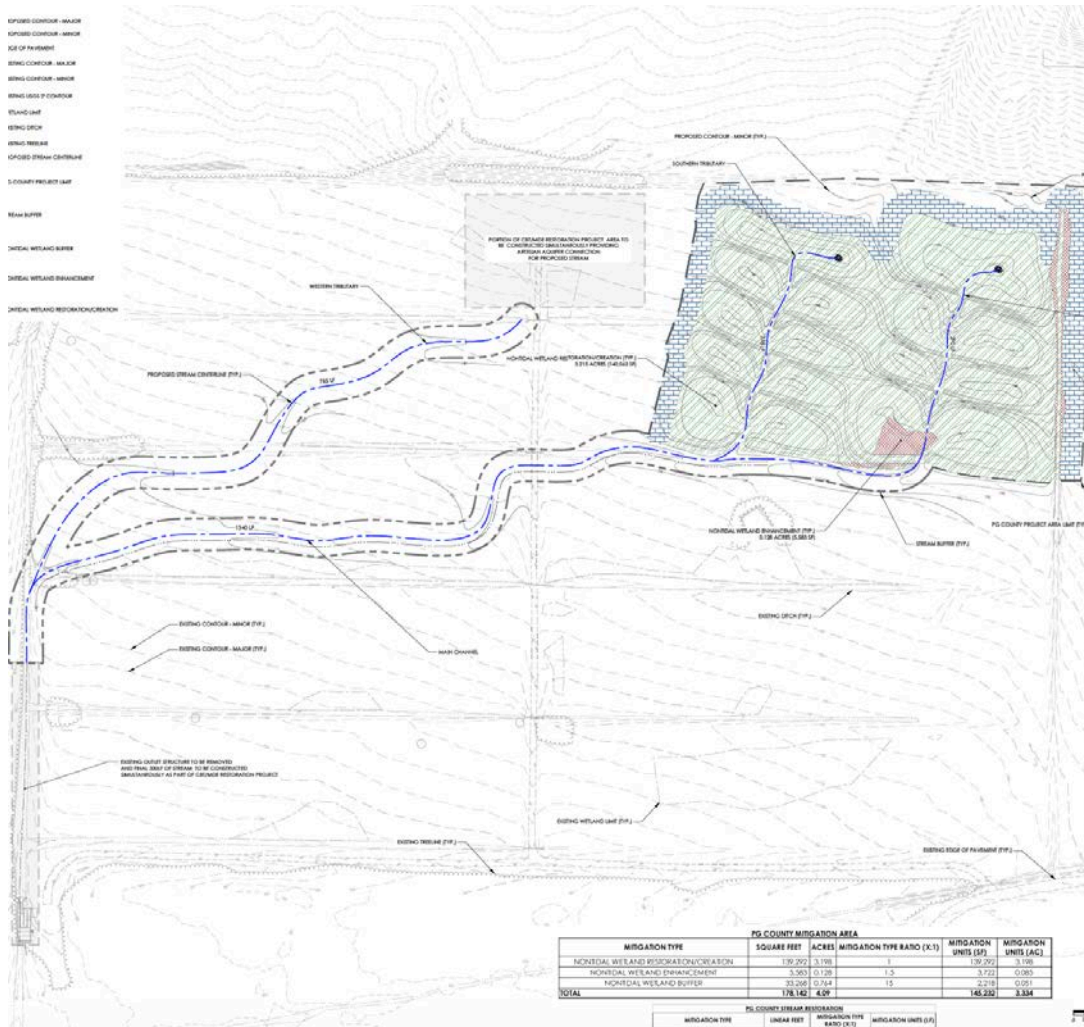


Project Objectives: CBT/MDE



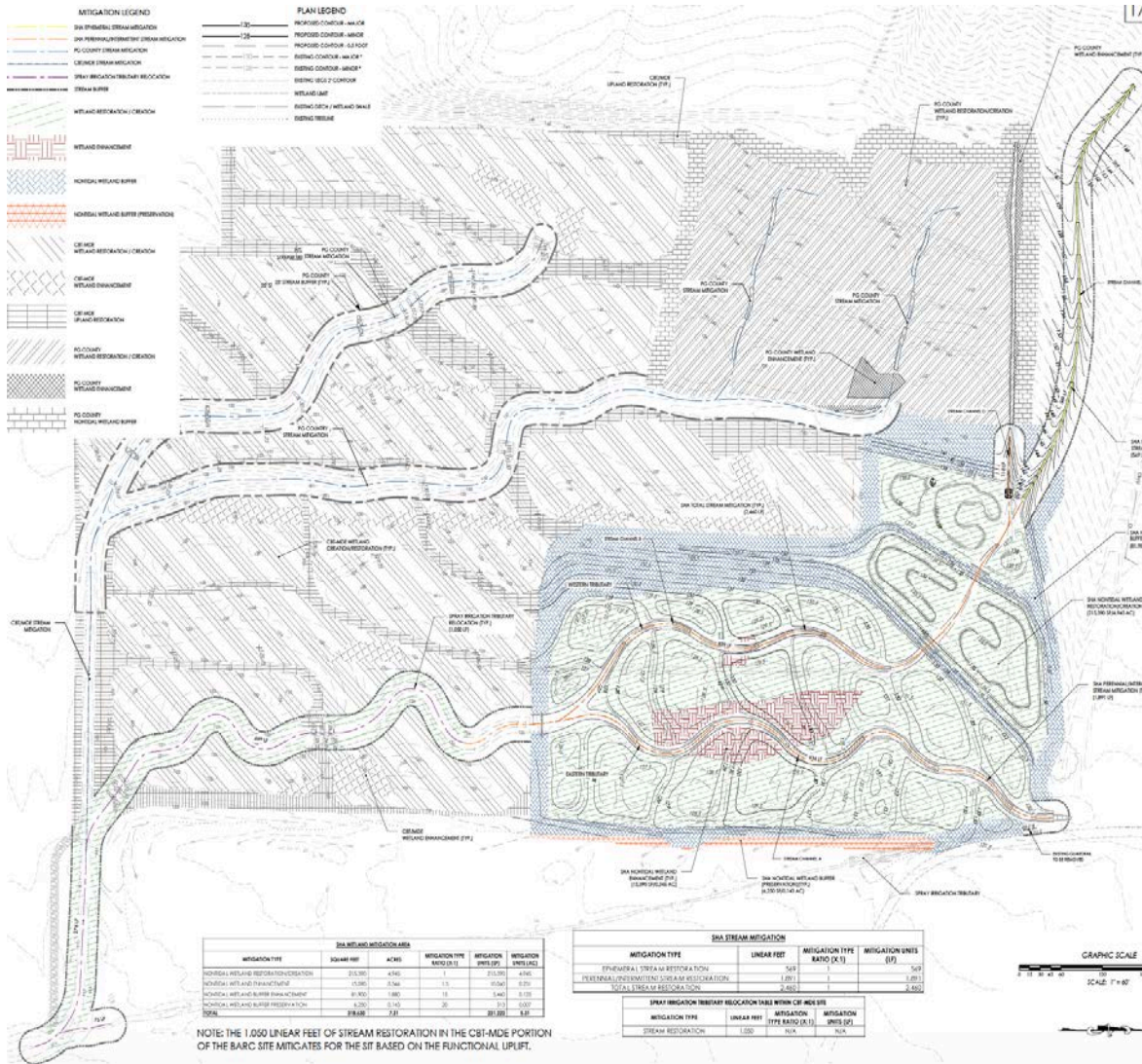
- Chesapeake Bay Trust/Maryland Department of Environment**
 - Phase Composition**
 - Provide 10.702 acres of wetland restoration, enhancement, creation
 - Provide 2.57 acres of upland forest restoration
 - Provide 330 lf of stream restoration
 - Downstream Connection to Spray Irrigation Tributary and Little Paint Branch
 - 10.33 units of In Lieu Fee (ILF) Compensatory Wetland Mitigation**

Project Objectives: PGDPWT



- **Prince Georges County Department of Public Works & Transportation**
 - Phase Composition
 - Provide 3.326 acres of wetland restoration, enhancement, creation
 - Provide 0.764 acres of upland forest restoration
 - Provide 2,733 lf of stream restoration
 - Downstream Connection to Spray Irrigation Tributary and Little Paint Branch
- Provide Advanced Mitigation for Planned Capital Improvement Projects
 - 2,733 stream mitigation units
 - 3.334 wetland mitigation units

Project Objectives: SHA



- **Maryland State Highway Administration**

- **Phase Composition**

- Provide 5.291 acres of wetland restoration, enhancement, creation
 - Provide 1.880 acres of upland forest restoration
 - Provide 3,510 lf of stream restoration
 - Upstream Diversion of Spray Irrigation Tributary & Connection to CBT/MDE Length

- **Provide Advanced Mitigation for Planned Capital Improvement Projects**

- 2,460 stream mitigation units
 - 5.31 wetland mitigation units



Pre-Construction Condition



Pre-Construction Condition



Pre-Construction Condition



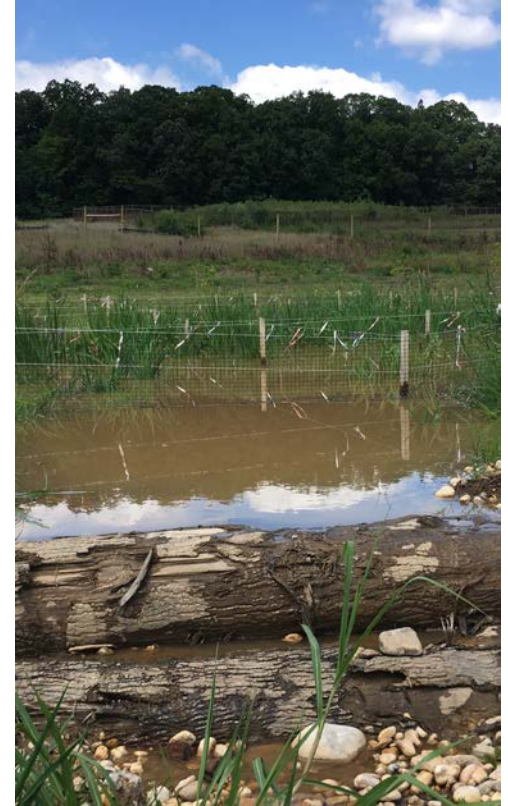
Pre-Construction Condition

Spray Irrigation Tributary: During & Post- Construction



PG County Wetland & Stream:

During &
Post-
Construction



Spray Irrigation Tributary SHA Stream & Wetland:

During &
Post-
Construction



PG County CBT/MDE SHA:

Post- Construction



Post- Construction



Thank You

FOR ADDITIONAL INFORMATION:

Brett Berkley, PWS

Sr. Vice President

GreenVest, LLC

2200 Somerville Road, Suite 300

Annapolis, MD 21401

410-987-5500

brett@greenvestus.com